



Timothy House

a PARK VIEW COMMUNITY

Apartment Homes for Seniors

Your New Lifestyle Begins Here

Services

- Social and recreational activities
- Education and health seminars
- Monthly community updates with management
- 24 hour maintenance
- Convenient business services, including stamps for purchase and use of office equipment
- Assistance with small home improvement projects
- Accessibility to food programs such as Meals on Wheels
- Assistance with income tax preparation

Conveniently Located Near

- Dulaney Plaza and Towson Town Center, featuring supermarkets, pharmacy, restaurants, department stores and specialty stores
- Medical Offices and St. Joseph Hospital/Health System and Greater Baltimore Medical Center
- Bykota Senior Center, Baltimore County's largest center for seniors
- MTA bus line #3 and a weekly shopping loop

Community features

- Beautifully landscaped courtyard and patio
- Electronically controlled lobby entrance
- Community room with kitchen
- Lounges with cable TV access
- Lending book and video library
- Library Bookmobile
- Onsite banking
- Beauty and Barber services
- Three Laundry facility
- Elevators

Apartment features

- Bathroom with enhanced safety features
- Monitored emergency pull cords
- Smoke alarms and fire sprinklers
- Fully-equipped kitchen
- Mini-blinds on all windows
- Handicapped accessible and adaptable



Timothy House a Park View Community

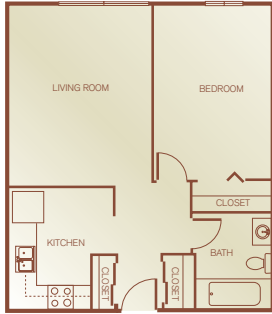
20 Dunvale Road · Towson, Maryland 21204

Phone: (410) 828-7185 · Fax: (410) 296-5824

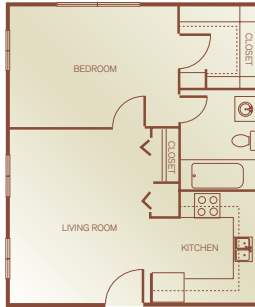
Email: timothyhouse@sheltergrp.com



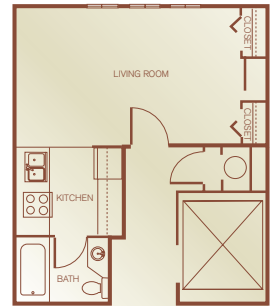
Floor Plans & Directions



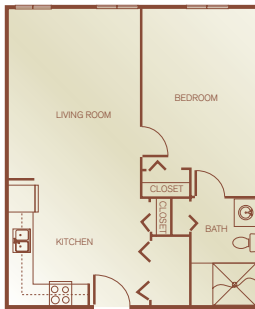
Interior Unit
1 Bedroom, 1 Bath
520 Square Feet



Corner unit
1 Bedroom, 1 Bath
520 Square Feet



Efficiency Unit Plan
1 Bedroom, 1 Bath
345 Square Feet



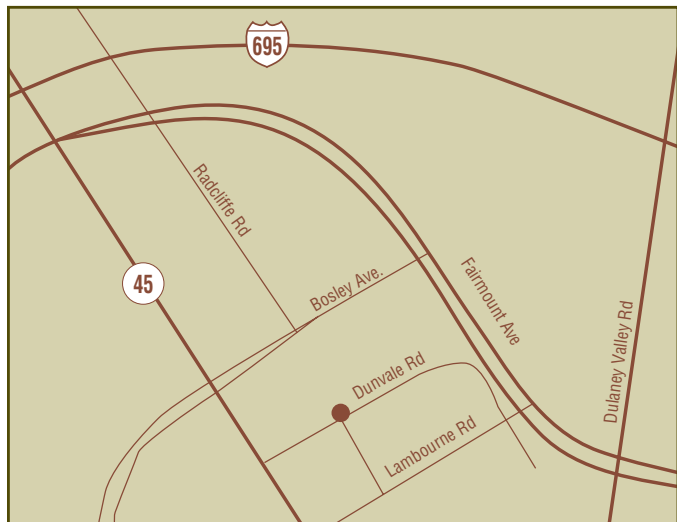
Handicapped unit
1 Bedroom, 1 Bath
520 Square Feet



1 Bedroom Unit Plan
1 Bedroom, 1 Bath
686 Square Feet

<i>Apartment Availability</i>
<i>Available Apartment</i>
<i>Monthly Rent</i>
<i>Security Deposit</i>
<i>Application Fee</i>

Park View is committed to Equal Housing Opportunities for people of all races, religions, ethnic groups, sexual orientation and disabilities, and all others protected by federal, state, or local law.



From I-695 Baltimore Beltway merge onto MD-45/York Rd (exit number 26A) toward Towson.
Turn left onto Dunvale Rd.

Timothy House a Park View Community

20 Dunvale Road · Towson, Maryland 21204
Phone: (410) 828-7185 · Fax: (410) 296-5824
Email: timothyhouse@sheltergrp.com

