



Park View

at OAK CREST

Apartment Homes for Seniors

Your New Lifestyle Begins Here

Services

- Social and recreational activities
- Education and health seminars
- Monthly community updates with management
- 24 hour maintenance
- Convenient business services, including stamps for purchase and use of office equipment
- Assistance with small home improvement projects
- Accessibility to food programs such as Meals on Wheels
- Transportation provided for community events

Conveniently Located Near

- The Shoppes at Harleysville
- Restaurants
- Health Care providers
- Senior Center

Community features

- Beautifully landscaped courtyard and patio
- Electronically controlled lobby entrance
- Community room with kitchen
- Game/Activity room
- Lending library and computer center
- Exercise room
- Wellness suite
- Beauty and Barber services
- Laundry facility with convenient lounge
- Elevator

Apartment features

- Bathroom with enhanced safety features
- Monitored emergency pull cords
- Smoke alarms and fire sprinklers
- Fully-equipped kitchen
- Mini-blinds on all windows
- Handicapped accessible and adaptable



Park View at Oak Crest

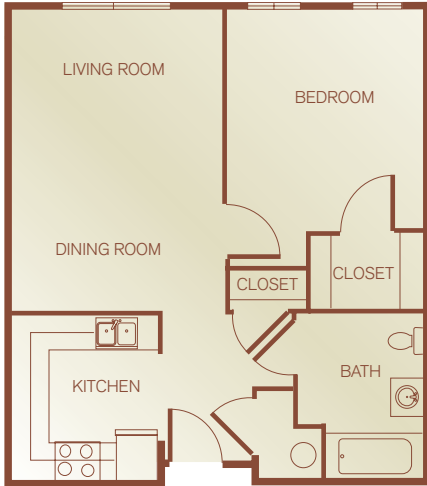
560 Oak Drive · Harleysville, Pennsylvania 19438

Phone: (215) 256-0840 · Fax: (215) 513-2801

Email: parkviewoakcrest@sheltergrp.com



Floor Plans & Directions

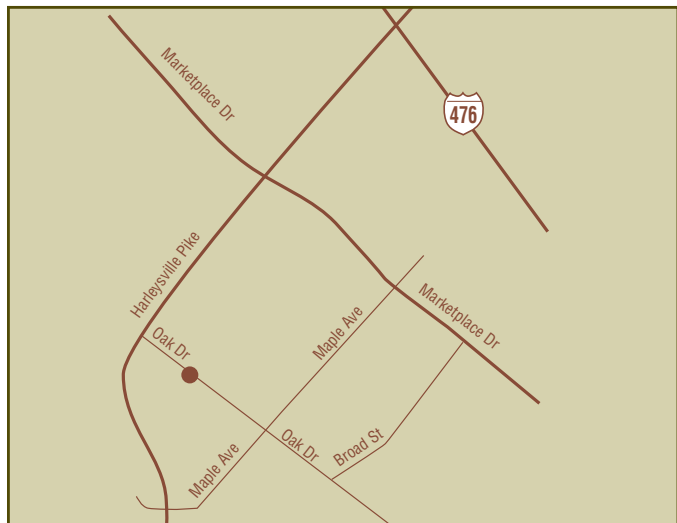


Plan B1
1 Bedroom, 1 Bath
588 Square Feet



Plan C1
2 Bedroom, 1 Bath
818 Square Feet

<i>Apartment Availability</i>
<i>Available Apartment</i>
<i>Monthly Rent</i>
<i>Security Deposit</i>
<i>Application Fee</i>



From I-476 North take PA-63 (exit number 31) toward Lansdale. Take the PA-63 West ramp toward Harleysville, onto Harleysville Pike/PA-63. Continue for 2.5 miles. Turn Left onto Oak Dr.

Park View is committed to Equal Housing Opportunities for people of all races, religions, ethnic groups, sexual orientation and disabilities, and all others protected by federal, state, or local law.

Park View at Oak Crest

560 Oak Drive · Harleysville, Pennsylvania 19438
Phone: (215) 256-0840 · Fax: (215) 513-2801
Email: parkviewoakcrest@sheltergrp.com

