



# Park View

at BOX HILL

Apartment Homes for Seniors

## Your New Lifestyle Begins Here

### *Services*

- Social and recreational activities
- Education and health seminars
- Monthly community updates with management
- 24 hour maintenance
- Convenient business services, including stamps for purchase and use of office equipment
- Assistance with small home improvement projects
- Accessibility to food programs such as Meals on Wheels
- Assistance with income tax preparation
- Access to Public Transportation

### *Conveniently Located Near*

- Giant Supermarket
- WallMart
- Movie Theaters
- Social Security Office
- Medical Buildings
- New Hospital

### *Community features*

- Beautifully landscaped courtyard and patio
- Electronically controlled lobby entrance
- Community room with kitchen
- Lending library and computer center
- Exercise room
- Wellness suite
- Beauty and Barber services
- Laundry facility with convenient lounge
- Elevator

### *Apartment features*

- Bathroom with enhanced safety features
- Monitored emergency pull cords
- Smoke alarms and fire sprinklers
- Fully-equipped kitchen
- Mini-blinds on all windows
- Handicapped accessible and adaptable



### *Park View at Box Hill*

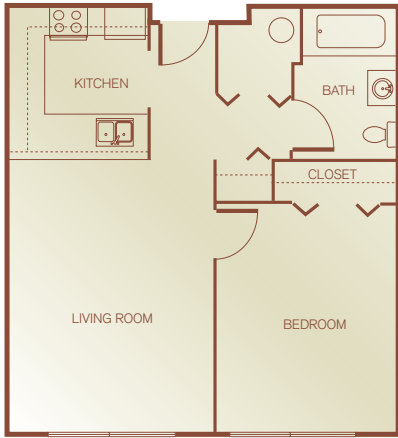
20 Box Hill South Parkway · Abingdon, Maryland 21009

Phone: (410) 515-6115 · Fax: (410) 515-7109

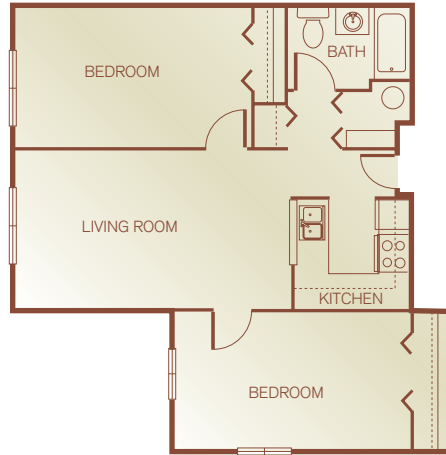
Email: parkviewboxhill@sheltergrp.com



# Floor Plans & Directions



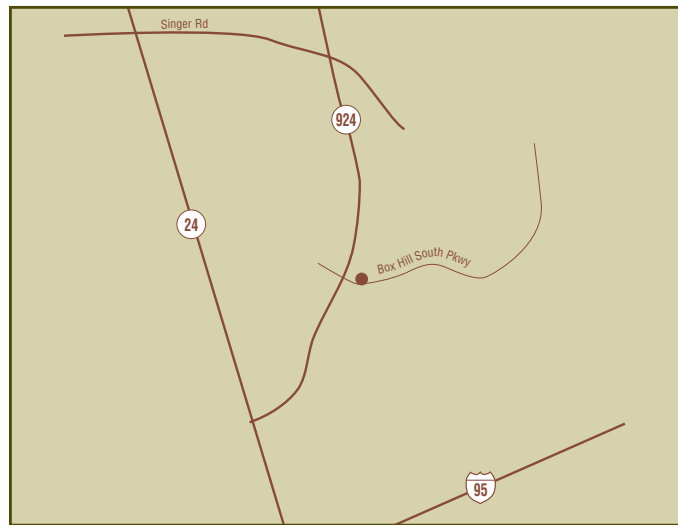
**Unit 1B**  
1 Bedroom, 1 Bath  
562 Square Feet



**Unit 2B**  
2 Bedroom, 1 Bath  
562 Square Feet

<i>Apartment Availability</i>
<i>Available Apartment</i>
<i>Monthly Rent</i>
<i>Security Deposit</i>
<i>Application Fee</i>

*Park View is committed to Equal Housing Opportunities for people of all races, religions, ethnic groups, sexual orientation and disabilities, and all others protected by federal, state, or local law.*



From I-95 North merge onto MD-24 North/Emmorton Rd (exit number 77B) toward Bel Air. Turn right onto MD-924/Emmorton Rd. continue about a half a mile, and turn right onto Box Hill South Pkwy.

## *Park View at Box Hill*

20 Box Hill South Parkway · Abingdon, Maryland 21009  
Phone: (410) 515-6115 · Fax: (410) 515-7109  
Email: parkviewboxhill@sheltergrp.com

