



Park View

at BETHLEHEM

Apartment Homes for Seniors

Your New Lifestyle Begins Here

Services

- Social and recreational activities
- Education and health seminars
- Monthly community updates with management
- 24 hour maintenance
- Convenient business services, including stamps for purchase and use of office equipment
- Assistance with small home improvement projects
- Accessibility to food programs such as Meals on Wheels
- Assistance with income tax preparation
- Access to Public Transportation

Conveniently Located Near

- Bethlehem's Historic District
- Local shopping malls
- Health care providers
- Churches
- Senior centers

Community features

- Beautifully landscaped courtyard and patio
- Electronically controlled lobby entrance
- Community room with kitchen
- Game/Activity room
- Lending library and computer center
- Exercise room
- Wellness suite
- Beauty and Barber services
- Laundry facility with convenient lounge
- Elevator

Apartment features

- Bathroom with enhanced safety features
- Monitored emergency pull cords
- Smoke alarms and fire sprinklers
- Fully-equipped kitchen
- Mini-blinds on all windows
- Handicapped accessible and adaptable



Park View at Bethlehem

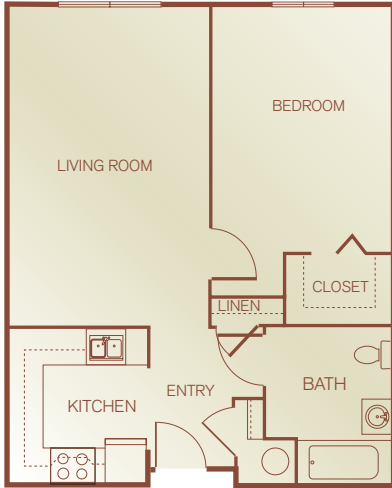
1241 Club Avenue · Bethlehem, Pennsylvania 18018

Phone: (610) 625-4999 · Fax: (610) 625-4998

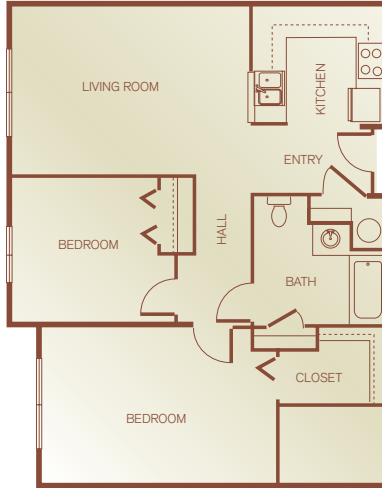
Email: parkviewbethlehem@sheltergrp.com



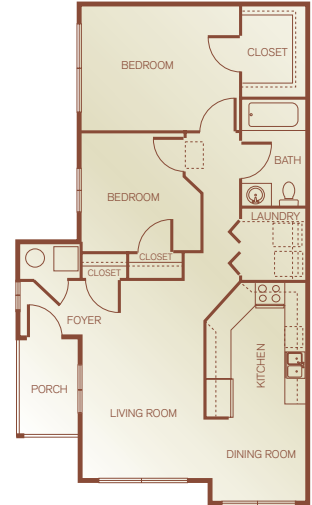
Floor Plans & Directions



Plan A1
1 Bedroom, 1 Bath
636 Square Feet



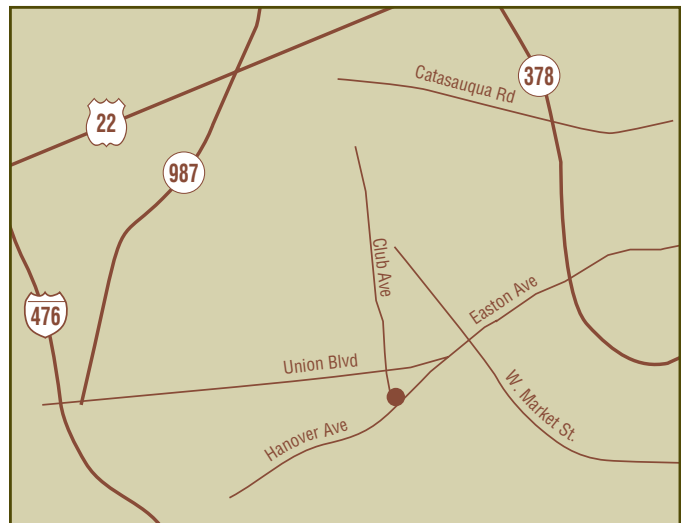
Plan B1
2 Bedroom, 1 Bath
835 Square Feet



Cottage
2 Bedroom, 1 Bath
923 Square Feet

<i>Apartment Availability</i>
<i>Available Apartment</i>
<i>Monthly Rent</i>
<i>Security Deposit</i>
<i>Application Fee</i>

Park View is committed to Equal Housing Opportunities for people of all races, religions, ethnic groups, sexual orientation and disabilities, and all others protected by federal, state, or local law.



From I-476 North merge onto US-22 East (exit number 56) toward PA-309/I-78 E/Allentown continue for about 10 miles. Take the PA-378 S exit toward Bethlehem. Keep right at the fork in the ramp. Merge onto PA-378 South for about a mile. Turn right onto Easton Ave. Turn right on to Club Ave.

Park View at Bethlehem

1241 Club Avenue · Bethlehem, Pennsylvania 18018
Phone: (610) 625-4999 · Fax: (610) 625-4998
Email: parkviewbethlehem@sheltergrp.com



EQUAL HOUSING OPPORTUNITY